

APPENDIX C

Appendix C – List of controlled zones outside of the city centre

Beaufort Road and Severn zone

Botanical zone

Broomhall and The Groves zone

Broomhill zone

Chandos Street zone

College Street zone

Crookesmoor zone

Drake House zone

Edward Street Flats Car Park

Endcliffe zone

Falving zone

Fawcett Street zone

Grange zone

Highfield zone

Hillsborough zone

Holme Lane zone

Lansdowne Flats Car Park zone

Lansdowne zone

Loxley New Road

Meadow Street zone

Napier zone

Netherthorpe zone

Porterbrook zone

Sharrow Vale centre zone

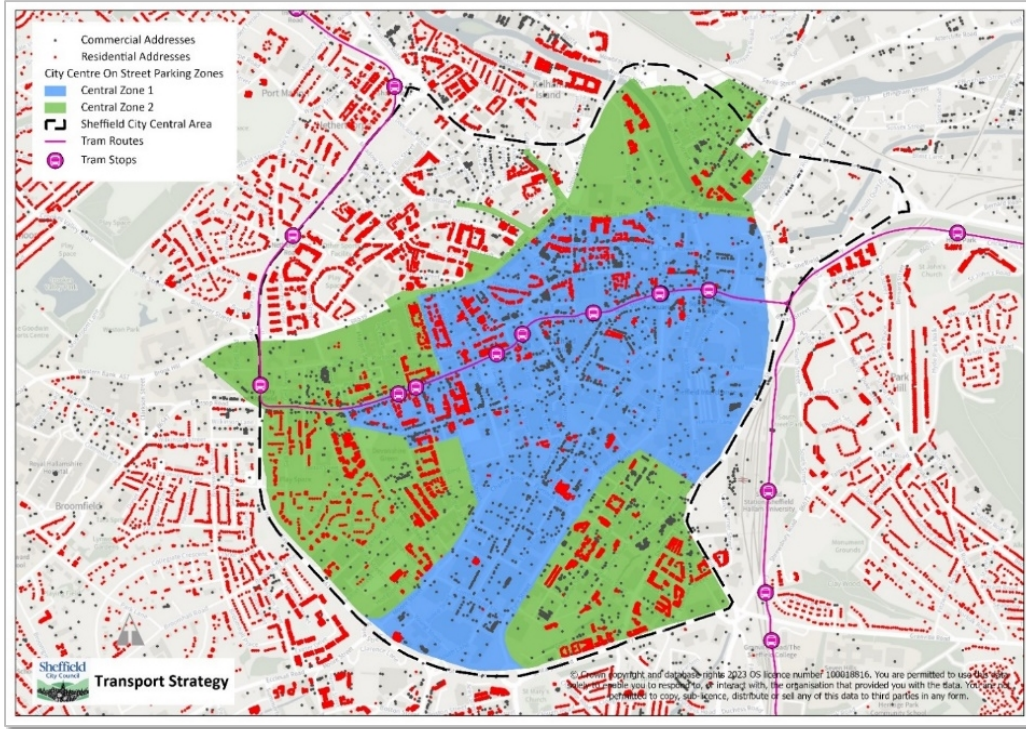
St George's zone

Stalker Lees zone

Vaughton Hill zone

APPENDIX D

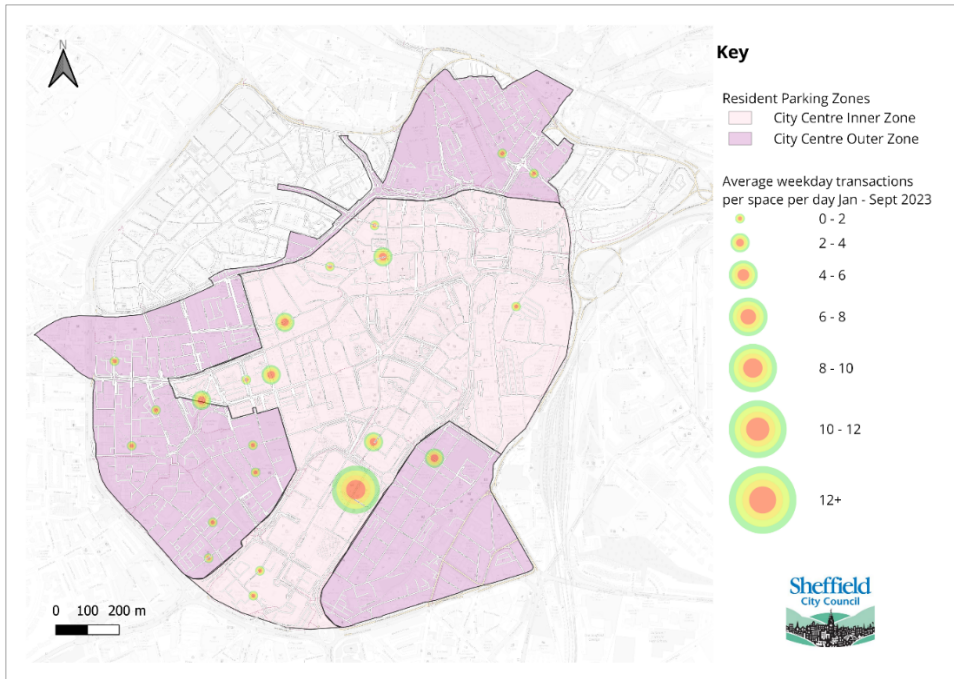
MAP OF THE CITY CENTRE ZONES



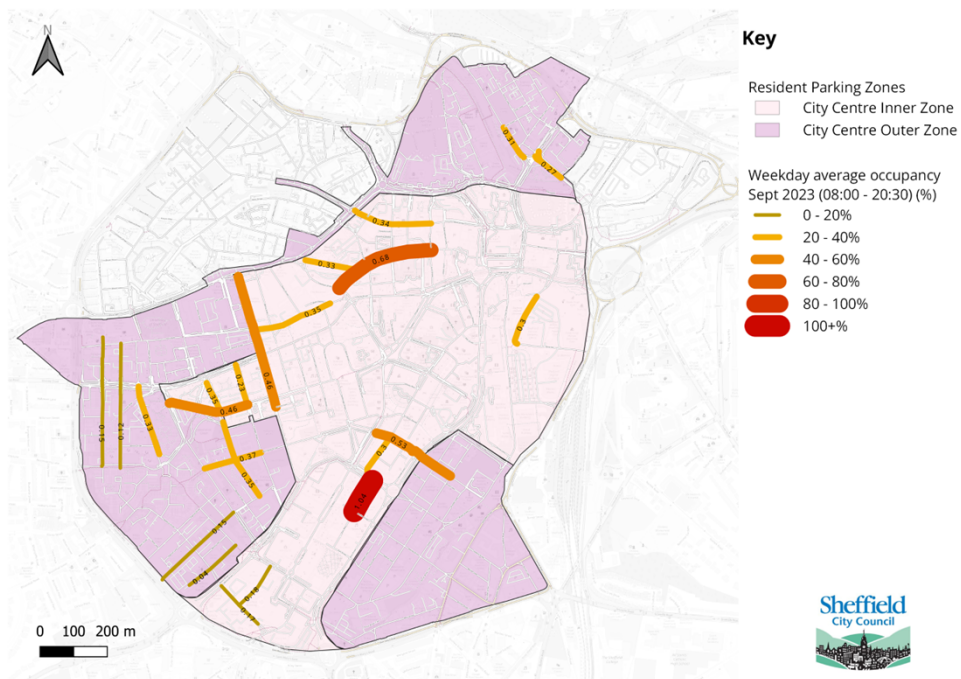
APPENDIX E

HEAT MAPS- DEMAND / OCCUPANCY LEVELS FOR PARKING IN CITY CENTRE

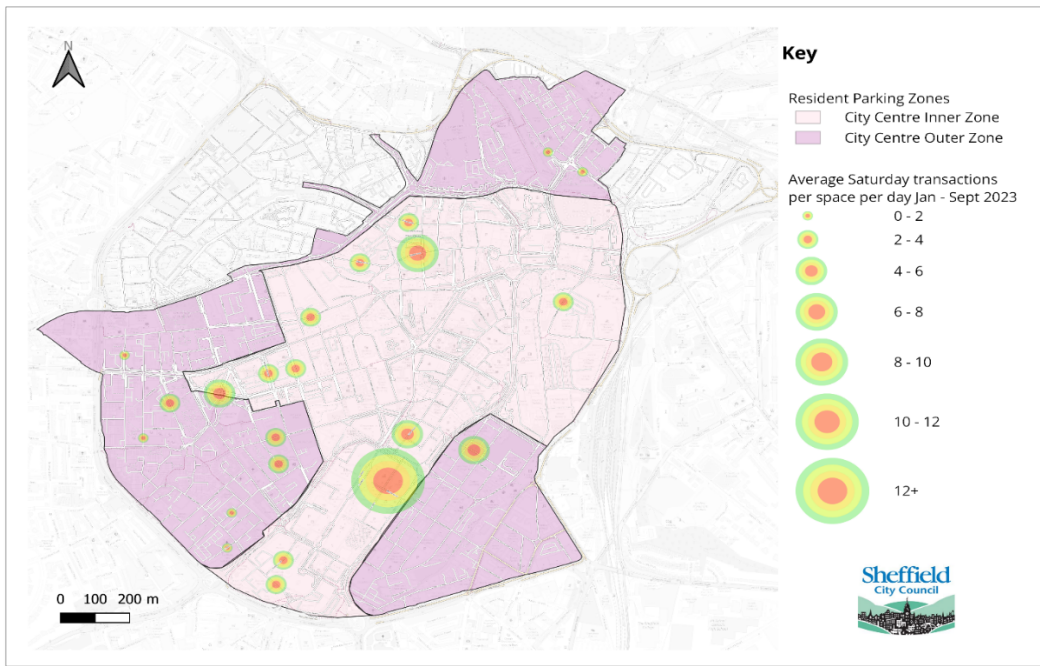
WEEKDAYS DEMAND



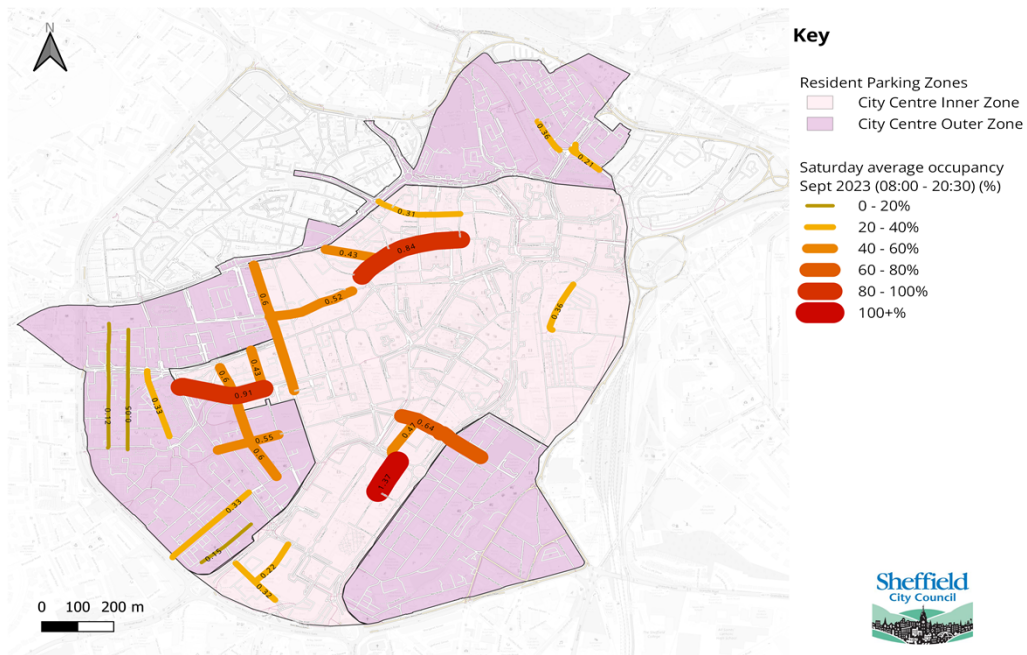
OCCUPANCEY LEVELS



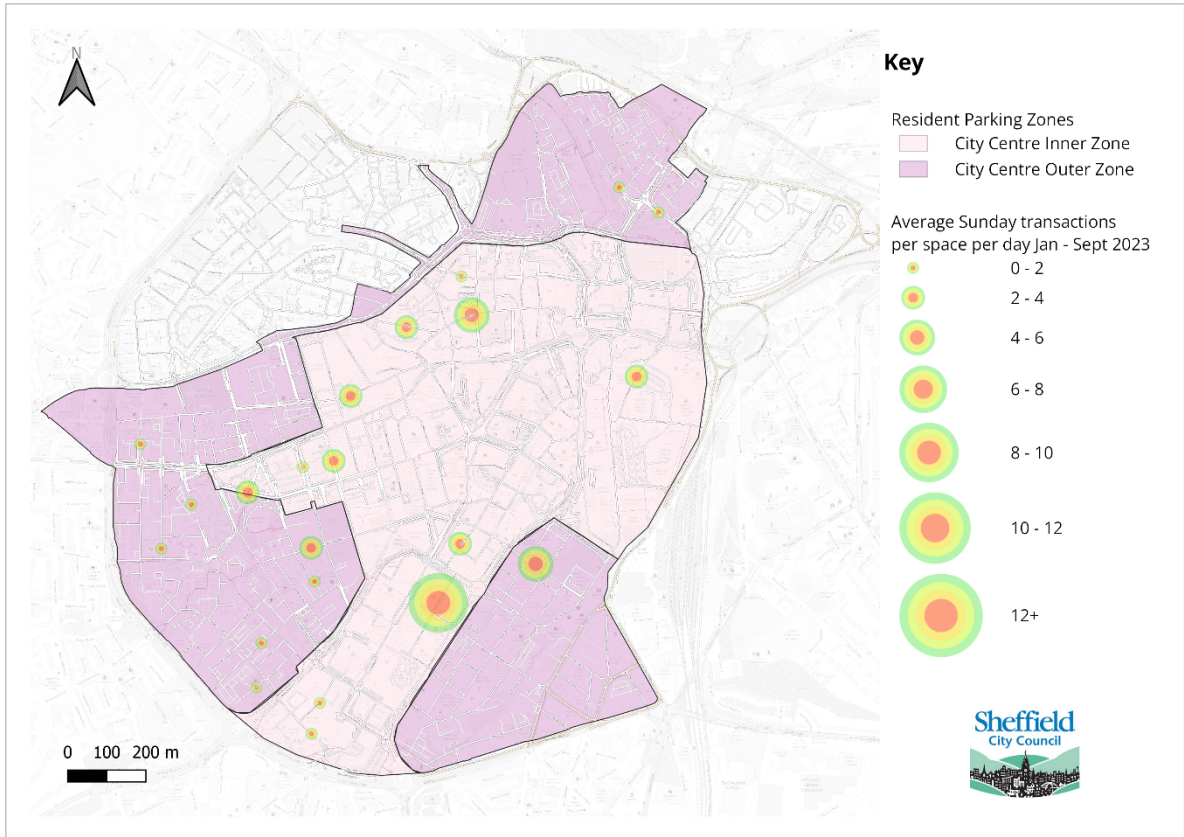
SATURDAY PARKING DEMAND



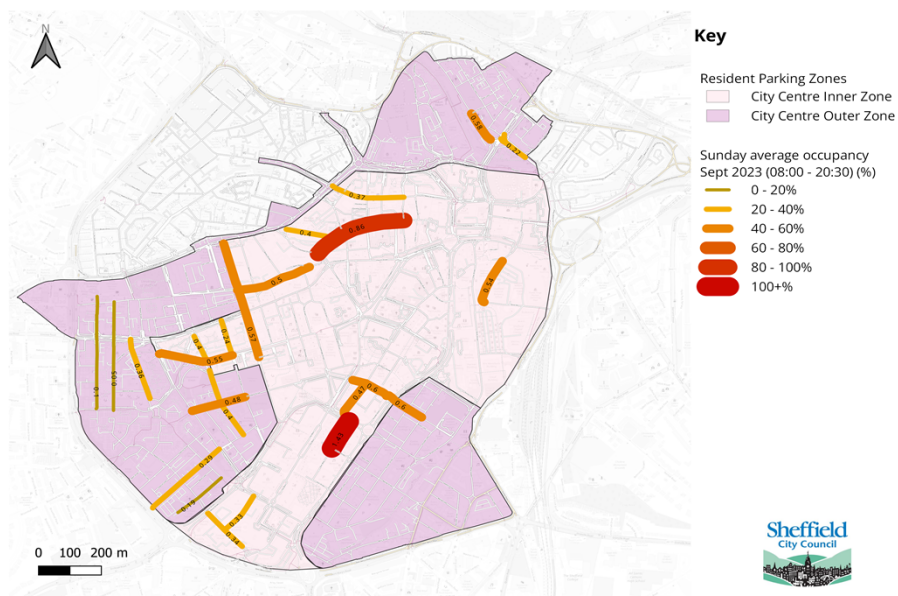
OCCUPNACEY LEVELS



SUNDAY – DEMAND FOR PARKING



OCCUPANCEY LEVELS



Street	Total Spaces	Weekday		Saturday		Sunday	
		Average daily transactions per space	Average occupancy (Sep 23)	Average daily transactions per space	Average occupancy (Sep 23)	Average daily transactions per space	Average occupancy (Sep 23)
Bishop Street	14	1.7	18%	2.5	22%	1.8	33%
Young Street	17	1.2	17%	2.1	32%	1.5	34%
Matilda Way	7	8.2	104%	14.3	137%	9.3	143%
Union Street	13	2.5	30%	4.4	47%	3.5	47%
Charles Street	6	3.1	53%	5.9	64%	4.4	60%
Pond Street	32	2.0	30%	2.9	36%	2.9	54%
Campo Lane	39	3.9	68%	6.4	84%	4.6	86%
Queen Street	22	2.0	34%	2.2	31%	1.7	37%
Hawley Street	49	2.0	33%	3.1	43%	2.1	40%
Trippet Lane	23	2.1	35%	3.5	52%	2.7	50%
Rockingham Street	12	2.5	46%	3.9	60%	3.1	57%
Eldon Street	40	1.4	35%	2.9	60%	1.9	40%
Devonshire Street	14	2.2	46%	4.9	91%	3.1	55%
Westfield Terrace	17	1.5	23%	2.7	43%	2.0	24%
Nursery Street	13	1.4	31%	2.0	36%	1.9	58%
Blonk Street	11	1.1	27%	1.6	21%	1.1	22%
Gell Street	42	0.5	15%	0.6	12%	0.3	10%
Victoria Street	30	0.4	12%	0.4	5%	0.3	5%
Cavendish Street	15	1.3	33%	2.2	33%	1.7	36%
Milton Street	48	0.8	15%	1.8	33%	1.2	29%
Hodgson Street	22	0.3	4%	0.7	15%	0.5	19%
Wellington Street	18	1.4	37%	2.8	55%	2.2	48%
Zone 1 (sample)	305	2.3	39%	3.8	54%	2.8	51%
Zone 2 (sample)	199	0.8	19%	1.3	24%	1.0	24%

Note;

The two columns for daily transactions (average number of transactions per space) and occupancy are not linked and were calculated separately.

The average daily transactions are based on the raw transaction data from both pay and display machines and pay by phone from January to October 2023.

The occupancy % is based on the paid duration field in the raw data (so only applies to the chargeable period of the day), for both pay and display machines and pay by phone data. Only the month of September 2023 was looked at. This does not include or capture other occupancy levels for an example green permits or blue badge parking,

The data for each of the parking zones was calculated as a weighted average based on the number of spaces in each of the sample streets for each zone.

Parking Survey conducted 23rd to 29th January 2024

Parking observation survey was conducted on street by CEO which taken place between 9am to 1pm everyday.

Streets highlighted in Pink is zone 1 & Green Zone 2

Below tables illustrates the split in use of pay and display bays

Monday to Friday

Street	Weekday - Utilisation %			
	Average daily Paid parking per space	Blue Badge parking space	Green Permit parking space	Total average
Bishop Street	3%	9%	6%	18%
Young Street	12%	6%	24%	42%
Matilda Way	17%	23%	60%	100%
Union Street	29%	30%	20%	79%
Charles Street	34%	18%	48%	100%
Pond Street	26%	8%	37%	71%
Campo Lane	32%	10%	24%	66%
Queen Street	40%	10%	18%	68%
Hawley Street	32%	4%	19%	55%
Trippet Lane	59%	3%	17%	79%
Rockingham Street	22%	3%	5%	30%
Eldon Street	34%	3%	25%	62%
Devonshire Street	41%	5%	23%	69%
Leadmill Street	17%	25%	15%	72%
Sydney Street	35%	10%	35%	80%
Brown Street	22%	8%	46%	76%
Arundel Street	53%	7%	25%	85%
Nursery Street	53%	19%	11%	83%
Blonk Street	52%	20%	8%	80%
Gell Street	31%	3%	16%	50%
Wellington Street	31%	2%	20%	53%

- Locations highlighted in Amber suggest that we are close to reaching the optimal level of parking and in Red indicates the optimal level exceeded particular in Zone 2 locations

Parking Survey Saturday

Street	Saturday		utilisation %	Total average
	Average daily Paid parking per space	Blue Badge parking space	Green Permit parking space	
Bishop Street	29%	44%	5%	78%
Young Street	42%	12%	4%	58%
Matilda Way	58%	42%	0%	100%
Union Street	5%	15%	0%	20%
Charles Street	40%	30%	0%	70%
Pond Street	37%	13%	27%	77%
Campo Lane	38%	6%	4%	48%
Queen Street	33%	0%	4%	37%
Hawley Street	26%	2%	0%	28%
Trippet Lane	44%	0%	0%	44%
Rockingham Street	17%	3%	0%	20%
Eldon Street	25%	0%	6%	31%
Devonshire Street	8%	0%	0%	8%
Leadmill Street	67%	0%	0%	67%
Sydney Street	49%	0%	6%	55%
Brown Street	38%	0%	6%	44%
Arundel Street	38%	4%	8%	50%
Nursery Street	50%	7%	0%	57%
Blonk Street	50%	0%	0%	50%
Gell Street	22%	3%	8%	33%
Wellington Street	40%	0%	5%	45%

Only 1 location has exceeded 80% on a Saturday which is Matilda Way, green permits are higher in weekday compared to Saturday

Parking Survey – Sunday

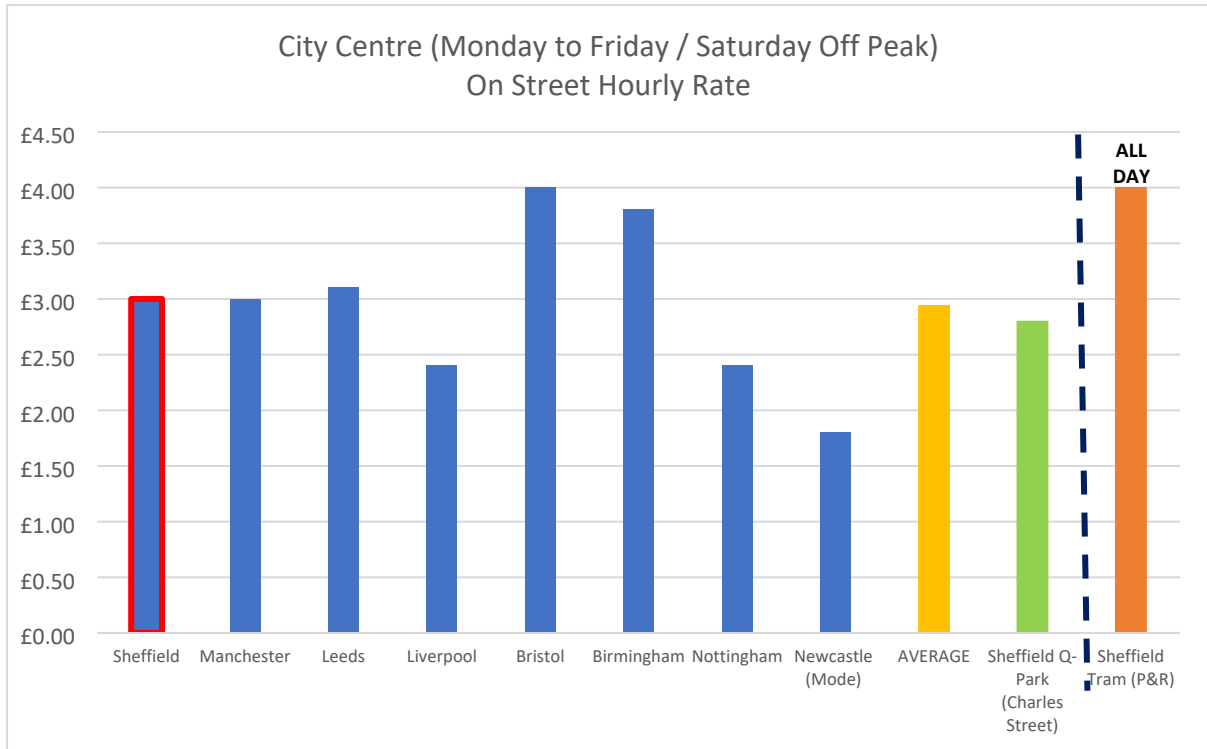
Street	Sunday		Utilisation %	
	Average daily Paid parking per space	Blue Badge parking space	Green Permit parking space	Total average
Bishop Street	28%	22%	0%	50%
Young Street	20%	0%	13%	33%
Matilda Way	72%	0%	14%	86%
Union Street	25%	25%	0%	50%
Charles Street	30%	0%	0%	30%
Pond Street	60%	7%	33%	100%
Campo Lane	84%	4%	12%	100%
Queen Street	75%	0%	5%	80%
Hawley Street	58%	5%	7%	70%
Trippet Lane	38%	56%	6%	100%
Rockingham Street	34%	0%	0%	34%
Eldon Street	40%	0%	3%	43%
Devonshire Street	84%	0%	0%	84%
Leadmill Street	67%	0%	0%	67%
Sydney Street	94%	0%	6%	100%
Brown Street	44%	6%	17%	67%
Arundel Street	88%	4%	4%	96%
Nursery Street	50%	0%	0%	50%
Blonk Street	75%	0%	0%	75%
Gell Street	15%	3%	3%	21%
Wellington Street	64%	0%	9%	73%

There are high number of locations that exceed the 80% optimal parking compared to rest of the days, especially Saturday.

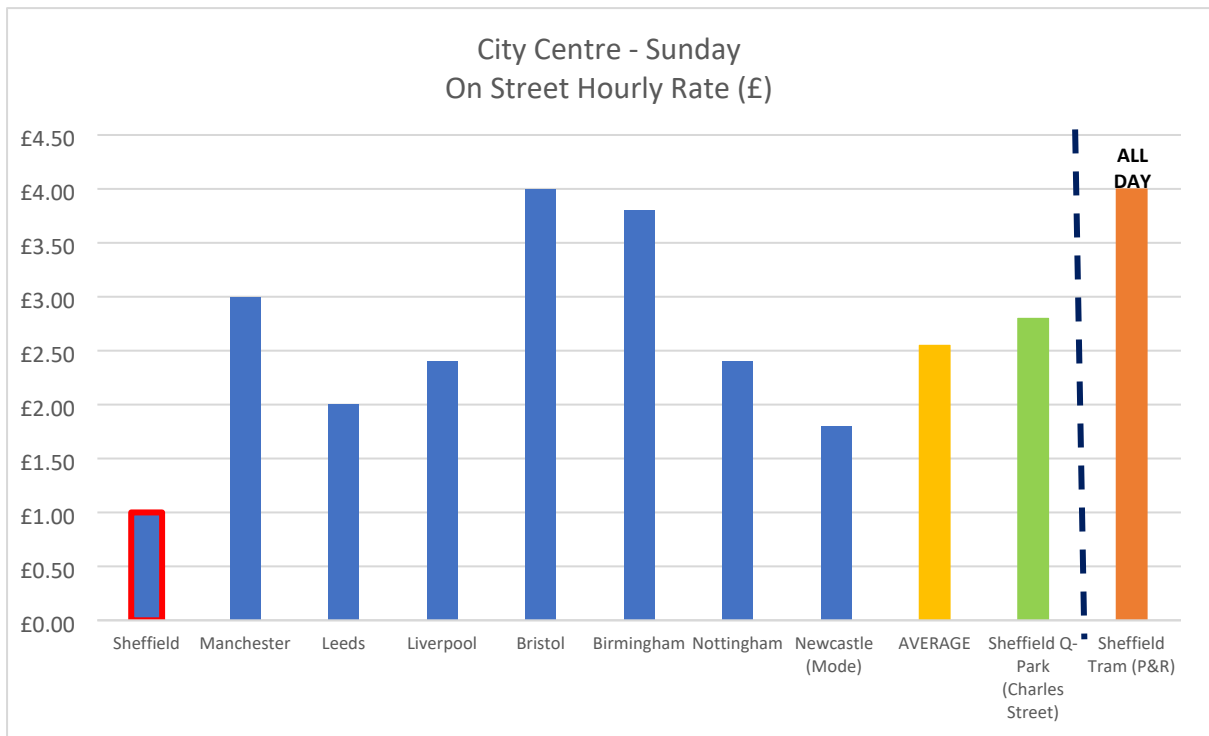
APPENDIX F

BENCH MARKING WITH OTHER CORE CITIES

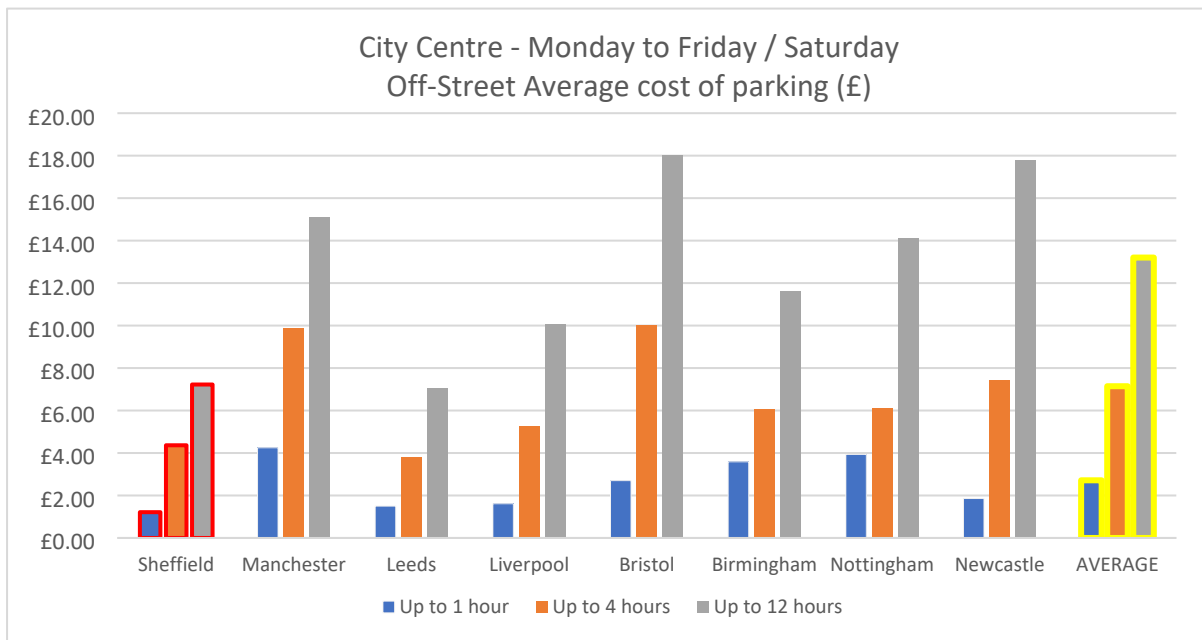
BENCHMARKING FOR ON STREET



BENCHMARKING FOR SUNDAYS – ON STREET



BENCHMARKING FOR MINDAY - SATURDAYS – OFF STREET



APPENDIX G

BENCHMARKING

PRIVATE OPERATORS OFF STREET - CITY CENTRE

MONDAY TO SUNDAY

SCC Car Park	No. of SCC Bays	Private Operator 1	Private Operator 2	Private Operator 3
Broad Lane / Brookhill / £1.45/hr Max £17.40 12.5hr	50	Tap 2 Park Bailey Lane 24 spaces Up to 1 hour £1.70 Max / £12.00 – 24hr	Q-Park Rockingham St, 551 spaces Up to 1 hour £ 2.50 Max / £ 18.00 – 24hr	Bank Park Upper Allen Street 19 spaces 1 Hour £0.50 Max £2.50 – 12 hr
Carver Lane £1.45/hr Max £5.50 6hr	60	NCP Wellington St, 449 spaces 1 hour £1.95 Max / £11.95 – 24hr	Q-Park Rockingham St, 531 spaces Up to 1 hour £ 2.50 Max / £ 18.00 – 24hr	NCP Campo Lane 150 spaces 1 Hour £3.95 Max / £18.95 – 24hr
Copper St £0.90/hr Max £7.25 12.5hr	14	Bank Park Russell Street 155 spaces 1 Hour £1.00 Max / £8.00 – 24 hr	RCP Parking Ltd Steelhouse Lane 80 spaces 1 Hour £1.60 Max / £5.00 – 24hr	
Devonshire Green / Milton Street £1.45/hr	53	NCP Bowdon Street 25 spaces 2 Hours £2.25	Bank Park Cavendish Street 70 spaces 2 Hours £1.00	Bank Park,S3 7WH 120 spaces 1 Hour£1.00 Max / £5.00 – 12 hr

Max £5.50 6hr		Max / £5.95 – 24hr	Max / £5.00 – 24hr	
Ebenezer Street, £0.90/hr Max £3.60 12.5hr	15	Bank Park Russell Street 155 spaces 1 Hour£1.00 Max / £8.00 - 24hr	RCP Parking Ltd Steelhouse Lane 80 spaces 1 Hour£1.60 Max / £5.00 – 24hr	
Eldon Street/ Fitzwilliam St £1.45/hr Max £17.40 12.5hr	137	Q-Park Rockingham St, 551 spaces Up to 1 hour £ 2.50 Max / £ 18.00 – 24hr	Bank Park Cavendish Street 70 spaces 2 Hours £1.00 Max / £5.00 – 24hr	Tap 2 Park Bailey Lane 24 spaces Up to 1 hour £1.70 Max / £12.00 – 24hr
Rockingham St £1.45/hr Max £7.25 12.5hr	38	NCP Wellington St, 449 spaces 1 hour £1.95 Max / £11.95 – 24hr	Q-Park Rockingham St, 551 spaces Up to 1 hour £ 2.50 Max / £ 18.00 – 24hr	NCP Furnival Gate 327 spaces 1 Hour£1.95 Max / £10.95 – 24hr
Silver Street £1.45/hr Max £4.35 12.5hr	12	NCP West Bar 24 spaces £5.45 per day	RCP Parking Ltd Steelhouse Lane 80 spaces 1 Hour £1.60 Max / £5.00 – 24hr	Bank Park 41 Silver Street Head 150 spaces 1 Hour £1.50 Max / £10.00 – 24hr
Stanley Lane £0.90/hr Max £3.60 12.5hr	21	Q-Park Riverside 533 spaces 1 Hour £3.50 Max / £22.00 – 24 hr	NCP, Blonk St 302 spaces 1 hour £1.95 Max /£6.95 – 24 hr	Bank Park Victoria Quays 330 spaces 1 Hour£0.80 Max / £8.00 – 24 hr
Trinity Street £0.90/hr Max £3.60 12.5hr	12	Bank Park Russell Street 155 spaces 1 Hour£1.00 Max / £8.00 - 24hr	Bank Park Upper Allen Street 19 spaces 1 Hour £0.50 Max £2.50 – 12 hr	
Wicker Lane / Windrush Way £0.90/2hr Max £3.50 12.5hr	45	ParkingEye Limited Holiday Inn Express, Blonk Street 38 spaces 2 Hours£2.00 Max / £8.00 – 24 hr	NCP, Blonk St, Sheffield S1 2AB 302 spaces 1 hour £1.95 Max /£6.95 – 24hr	Bank Park Victoria Quays 330 spaces 1 Hour£0.80 Max / £8.00 – 24 hr
Workhouse Lane £1.45/hr Max £7.25 12.5hr	63	RCP Parking Ltd Steelhouse Lane 80 spaces 1 Hour £1.60 Max / £5.00 – 24hr	RCP Parking Ltd Bridge Street 60 spaces 1 Hour£2.00 Max / £6.50 – 24 hr	NCP West Bar Paradise Street 24 spaces £5.45 per day

APPENDIX H

CPI CALCULATED

Table 1 **CPIH, CPI & RPI indices: the latest three years**

	CPI	
	Index (2015=100)	Percentage change over 12 months
	D7BT	D7G7
Jan	114.9	5.5
Feb	115.8	6.2
Mar	117.1	7.0
Apr	120.0	9.0
May	120.8	9.1
Jun	121.8	9.4
Jul	122.5	10.1
Aug	123.1	9.9
Sep	123.8	10.1
Oct	126.2	11.1
Nov	126.7	10.7
Dec 2022	127.2	10.5
Jan	126.4	10.1

Feb	127.9	10.4
Mar	128.9	10.1
Apr	130.4	8.7
May	131.3	8.7
Jun	131.5	7.9
Jul	130.9	6.8
Aug	131.3	6.7
Sep	132.0	6.7
Oct	132.0	4.6
Nov	131.7	3.9
Dec 2023	132.2	4.0

Jun-22	121.8
Dec-23	132.2
Rate	1.09
% Rate	8.539

APPENDIX I

FINANCIAL IMPLICATIONS

Summary

Summary	Total Income (£) for April 22 to March 23	Total Income (£) for April 23 to December 23	FYE Effect on Apr 23 - Mar 24	Averaged Income	CPI	Adjusted Income 1	Demand Reduction Factor	Adjusted Income 2	Income Differential	Sunday Diff as % of Total Diff	Sunday Income Differential
	a	b	$c = \frac{(b - a) * 12}{12}$	$d = (a + c) / 2$	e	$f = d * e$	g	$h = f * g$	$k = h - d$		
On Street	£1,888,500.85	£1,193,392.90	£1,591,190.53	£1,739,845.69		£2,126,146.71		£2,041,100.85	£301,255.15	79%	£239,136.63
Off Street	£897,791.19	£836,079.35	£1,114,772.47	£1,006,281.83		£1,241,832.39		£1,192,159.09	£185,877.27	81%	£150,505.92
Miscellaneous	£731,455.21	£517,707.50	£690,276.67	£710,865.94		£771,566.78		£740,704.11	£29,838.17		
Total	£3,517,747.25	£2,547,179.75	£3,396,239.67	£3,456,993.46		£4,139,545.88		£3,973,964.05	£516,970.59	75%	£389,642.55
								Cost of Implementation	-£33,000.00		
								Additional Income Target	£483,970.59		